

Ink-O-Matic

The Ink-O-Matic system is ideal for the retail environment. It successfully refills a wide variety of inkjet cartridges quickly and easily. Our ink is specially formulated to refill these cartridges. The Ink-O-Matic tests and refills more than 77 HP, Lexmark, Dell and Samsung cartridges.



Easy-to-Use

- Ink filling through the head for all black and most color cartridges
- No cutting or drilling necessary for use
- Employee guided via easy-to-use touch screen with user-friendly interface
- Minimal training required for successful operation
- Video-based training and interactive customer support accessible through 15" LCD monitor
- Automatic cartridge detection prevents refill errors
- 1 Liter bulk containers cannot be loaded improperly

Ensures Quality Output

- Cartridge tester (integrated) ensures that only usable cartridges are filled
- Cartridge tester (integrated) checks print quality after refill
- Integrated sonicator cleans inkjet print heads for optimal performance
- PC driven system ensures accurate process control
- Advanced technologies, including magnetostrictive sensors from robotics, control ink fill accuracy with fewer moving parts
- Pigment and dye based inks specially formulated for use with a specific range of cartridges

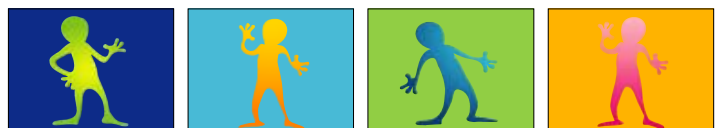
Additional Benefits

- Acoustic dampening design reduces excess noise
- Easy upgrades for software and operational parts
- Extensive R&D team provides prompt access to new ink formulations
- Continuous Sales and stock logs can perform inventory monitoring

Complementary Equipment and Accessories

Centrifuge - A compact unit to completely drain ink from used cartridges. Recommended for use with the Ink-O-Matic.

- Drains ink completely for accurate refills
- Compatible with all cartridges types
- Multiple speed settings
- Easy waste ink disposal
- Safety lock design
- Dimensions (L x W x H): 17" x 16" x 11" / 431 mm x 406 mm x 279 mm



The Ink-O-Matic successfully fills a wide variety of cartridges quickly and easily. Our ink has been specially designed to refill these cartridges.

Hewlett Packard

15 (C6615A)	15 (C6615D)	17 (C6625A)	17 (C6625D)
21 (9351A)	22 (9352A)	23 (C1823D)	23 (C1823G)
27 (C8727A)	28 (C8728A)	41 (51641)	40 (51640A)
45 (51645A)	45 (51645G)	56 (C6656A)	57 (C6657A)
78 (C6578A)	78 (C6578D)	92 (9362W)	93 (9361W)
94 (C8765)	95 (C8766)	96 (C8767)	97 (C9363)
130 (C8767)	131 (C8765)	134 (C9363)	135 (C8766)
338 (C8765)	339 (C8767)	343 (C8766)	344 (C9363)
852 (C8765)	853 (C8767)	854 (C9361Z)	855 (C8766)
857 (C9363)	132 (C9362HJ)	136 (C9361HJ)	336 (C9362EE)
342 (C9361EE)			

Lexmark

16 (10N0016)	17 (10N0217)	19 (15M2619)	20 (15M0120)
25 (15M0125)	26 (10N0026)	27 (10N0227)	32 (18C0032)
33 (18C0033)	34 (18C0034)	35 (18C0035)	48 (17G0648)
50 (17G0050)	55 (16G0055)	70 (12A1970)	71 (15M2971)
75 (12A1975)	80 (12A1980)	82 (18L0032)	83 (18L0042)
85 (12A1985)	88 (18L0000)		

Dell

7Y743 (462-0531)	7Y745 (462-0532)	J5566 (310-5372)	J5567 (310-5375)
M4640 (310-5368)	M4646 (310-5371)	T0529 (463-1407)	T0530 (463-1408)

Samsung

Samsung INK M70	Samsung INK C70	Samsung INK M30	Samsung INK C30
Samsung Ink M50	Samsung INK C50	Samsung INK C60	Samsung INK M80
Samsung Ink C80	Samsung INK M90	Samsung INK C90	

Ink-o-Matic Technical Specifications:

Electrical Connection: 110 VAC 50/60 Hz, 1.5 KW
 Electric Current : Max. 13.5 A
 Air Consumption: Built in compressor
 Air Pressure: MAXIMUM 4kgf (4bar)
 Shipping Weight: 419 lbs (190 KG)
 Dimensions (L x W x H): 32" x 36" x 71" / 800 mm x 900 mm x 1798 mm
 PC: Pentium 4
 Operating System: Windows XP
 15" Touch Screen Monitor
 Internet Access Enabled

